

# **Tokyo Metropolitan Parents Hand in Hand Association Guide**

Social Welfare Corporation

**Tokyo Metropolitan Parents' Association for the Mentally Retarded**

Tokyo Metropolitan Parents Hand in Hand Association Guide

3rd Floor, STS Building  
8-3-39, Nishi-Shinjuku  
Shinjuku-ku, Tokyo (160-0023)

Telephone: (03) 5389-2600

Fax: (03) 5389-4090

URL: <http://www.ikuseikai-tky.or.jp>

E-mail: [info@ikuseikai-tky.or.jp](mailto:info@ikuseikai-tky.or.jp)

## **I. Brief history**

The association was founded in October 1961 to enhance systems and measures for the welfare, education, employment and medical care of children/persons with intellectual disabilities under the strong leadership of their parents. It was reorganized as an incorporated body in September 1962. In March 1972 it was authorized as a social welfare corporation, thereby establishing its local chapter in each ward, city, town, a special school, a welfare center for children and a rehabilitation and support center. The organization has 9,000 regular members and 850 associate members as of March 2005.

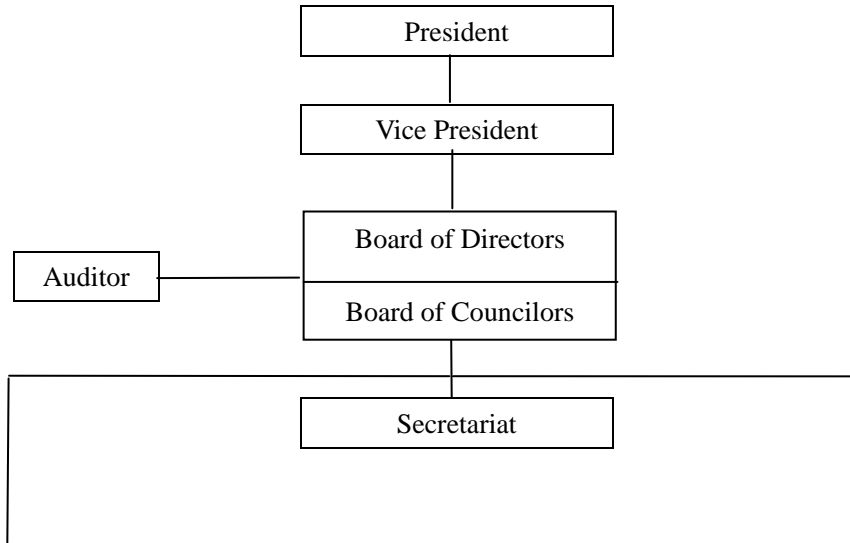
## **II. Purposes**

The Corporation, which is primarily composed of parents of persons with intellectual disabilities, aims at the development and maintenance of mental and physical health of every person with intellectual disability with respect for his/her human rights and choices. It shall make efforts towards the creation of a welfare society suited for the 21<sup>st</sup> Century in which each person with intellectual disability will be able to have an opportunity to participate in activities in social, economic, cultural and all other domains and live safely and comfortably. The Corporation shall continue its endeavor to materialize the following measures for the reform of welfare in close collaboration with the Tokyo Metropolitan Government and municipal governments and continue its activities to imbue society with a spirit of welfare.

1. To improve education (early therapeutic education for children with intellectual disabilities, appropriate enrollment at schools, special classrooms for children with disabilities, special schools, visiting education, social education and the development of vocational ability and measures for children with learning disabilities, ADHD children and severely functionally autistic children)
2. To strongly promote measures for home care service
  - To strengthen the ties with parents associations in a ward, city, town and village and enrich activities
  - To improve and increase the activities and conditions of community workshops; to enhance their legalization
  - To develop and promote group homes, living quarters and trial group homes to support the independent living of persons with intellectual disabilities; to improve their support functions
  - To promote strongly the establishment of living quarters for the elderly and people with severe disabilities; to improve home care services
  - To promote and improve regional social welfare networks
  - To improve a support system for living as a community member

3. To improve the management of residential/non-residential rehabilitation facilities and nonresidential sheltered workshops and strengthen the ties with community; to increase the number of such facilities within Tokyo
4. To improve the system to address complaints properly
5. To improve the activities of the Sectional Meeting of Persons with Intellectual Disabilities and promote their participation in the activities of their parents associations
6. To enhance the activities to protect the rights of persons with intellectual disabilities, promote the use of the Adult Guardianship System and improve consultation activities
7. To promote the expansion of employment and support for holding jobs; to reinforce support for getting jobs
8. To promote measures for the elderly; to construct nursing homes for the elderly and group homes for the elderly
9. To support leisure activities such as sports and cultural activity, recreational activity and trips of youths for persons with intellectual disabilities and promote their international exchanges
10. To promote and improve emergency temporary shelter service, respite care and short stay to assist family members
11. Activities to gain a deeper understanding of persons with intellectual disabilities broadly within community

### III. Organization



Activities

1. Enlightening activity –  
 To issue news letters – Editorial Committee  
 To issue news letters of the Sectional Meeting of Persons With Intellectual Disabilities – Editorial Committee  
 Lectures on welfare, various seminars, publication of books
2. Committee for Activity vis-à-vis the Tokyo Metropolitan Government and Other External Organizations
3. Financial measures activities – Financial Measures Committee
4. Chapter activities – Meeting of Chiefs of Local Chapters  
 Block Meeting’s Liaison Council for Promoting Living in Community
5. Sectional Meeting of Facilities
6. Sectional Meeting on Education
7. Sectional Meeting of Persons with Intellectual Disabilities  
 --Steering Committee  
 --Support Committee
8. Sectional Meeting on Sports and Cultural Activity
9. Sectional Meeting on Staff Training
10. Sectional Meeting on Human Rights Protection
11. Personnel Committee
12. Measures Review Committee
13. Budget and Policy Committee
14. External Advisory Committee
15. Liaison Committee for the Tokyo Support Center for Developmental Disorders and Tokyo Council of Social Welfare

Service Division

- A. Sectional Meeting of Community Workshops:  
 Review Committee for Community Workshops and Sheltered Workshops  
 Meeting of Chiefs and Instructors  
 Meeting of Directors  
 Meeting to Report Research Papers on Community Workshops
- B. Sectional Meeting of Facilities:  
 Meeting of Directors of Facilities  
 Meeting of Chiefs and Section Chiefs  
 Meeting of Persons in charge of Clerical Works  
 Committee of Stipulating Regulations
- C. Sectional Meeting of Daytime Living Quarters:  
 Meeting of Leaders of Daytime Living Quarters
- D. Sectional Meeting on Regional Support – Living quarters, group homes and emergency temporary shelter service:  
 Meeting of Support Workers for Living in Community  
 Review Committee of Living Quarters and Group Homes  
 Meeting of Living Quarters and Group Homes  
 Review Committee of Living Quarters and Group Homes for Severely Disabled Elders  
 Liaison Committee for Non-residential Facilities, Workshops, Daytime Living Quarters & Group Homes  
 Committee of Administrators of Property  
 Meeting to Report Research Papers on Living Quarters and Group Homes  
 Review Committee of Emergency Temporary Shelter Service
- E. Services such as home care for the elderly
- F. Sectional Meeting on Consultation and Support for Employment:  
 Office of Consultation on Adolescence
- G. Meeting of Vocational Counselors  
 Meeting of Counselors for Persons with Intellectual Disabilities
- H. Review Committee of Emergency Subsidized Development Projects
- I. Steering Committee of Tobuki Ikusei-en  
 Steering Committee of Ongata Ikusei-en
- J. System to address complaints properly

#### IV. Content of Services

As of FY 2006

|                 |
|-----------------|
| Welfare Service |
|-----------------|

1. Management of Tobuki Ikusei-en, rehabilitation facility for persons with intellectual disabilities (Opened in October 1996)
2. Management of Ongata Ikuse-en, rehabilitation facility for persons with intellectual disabilities (Opened in November 1999)
3. Management of Suginami Ikue-ein, rehabilitation facility for persons with intellectual disabilities(Opened in April 2006)
4. Management of Suginami Independent Living Support Center for disabled persons, Suginami.(Opened in April 2006)
5. Home nursing care service for the elderly (activities to provide home care service to aged people in Katsushika Ward and Higashi-Murayama City) (Opened in April 1999)
6. Management of the Setagaya Support Center of Living (Living quarters as group home and as temporary shelter for persons with severe disabilities) (Opened in April 2003)
7. Management of the Takasago Welfare Home (Opened on April 1, 2004) (Type A social welfare service)
8. Management of the Kamakura Welfare Home (Opened on April 1, 2004) (Type A social welfare service)
9. Management of the Nishi-mizumoto Welfare Home by commissioning (Opened on April 1, 2004) (Type A social welfare service)
10. Management of Half-way House (Koto since November 1972; Ota since May 1975; Toshima since April 1986; Tachikawa since April 1993) (Type A social welfare service)
11. Management of living quarters (Our organization was designated as an official body for managing the living quarters in April 1978 by the Bureau of Social Welfare and Public Health of the Tokyo Metropolitan Government.)
12. Management of the Support Center of Living Quarters (Jonan Support Center of Living Quarters from April 1988; Johoku and Jokyo Support Centers of Living Quarters from FY1990; Tama Support Center of Living Quarters from April 1993)
13. Management of living quarters in wards and cities by commissioning (in Nerima, Nakano, Suginami, Katsushika, Sumida, Chuo, Setagaya, Meguro, Minato, Arakawa, Koto and Kita wards and Hino and Mitaka cities)
14. Cleaning service of metropolitan parks (Commissioned by the Bureau of Construction of the Tokyo Metropolitan Government from 1984)
15. Management of the Tabata Welfare Workshop in Kita Ward by commissioning (by the Kita Ward Government since 1985)

- The Workshop was reorganized as Kita Municipal Tabata Welfare Workshop, a workshop in compliance with legal regulations (April 1, 2004)
16. Management of Ota Municipal Kusunoki Welfare Center by commissioning (by the Ota Ward Government since April 1988) (Type A social welfare service)
  17. Management of Ota Municipal Kugahara Welfare Center by commissioning (by the Ota Ward Government since April 1991) (Type A social welfare service)
  18. Management of Setagaya Municipal Todoroki Welfare Center by commissioning (by the Setagaya Ward Government since April 1991)
  19. Management of Shinjuku Municipal Shinjuku Living Trial Center by commissioning (by the Shinjuku Ward Government since April 1992)
  20. Management of Adachi Municipal Ayase Welfare Center by commissioning (by Adachi Ward Government since October 1992) (Type A social welfare service)
  21. Management of Setagaya Municipal Sakurajosui Welfare Center by commissioning (by the Setagaya Ward Government since April 1993) (Type A social welfare service since April 2003)
  22. Management of Ota Municipal Umenoki Center by commissioning (by the Ota Ward Government since July 1993) (Type A social welfare service)
  23. Establishment of the support centers of living (The center has been established at Koto, Ota, Toshima and Tachikawa living quarters since April 1991)
  24. Living-in-community program and peer counseling service (Commissioned by the Bureau of Social Welfare and Public Health of the Tokyo Metropolitan Government in 1993)
  25. Cleaning service of metropolitan special schools (Commissioned by Minato and Nakano Special Schools since June 1995, Oji Special School since April 1999 and Sumida Special School since April 2000)
  26. Management of Koto Municipal Higashisuna Welfare Center by commissioning (by the Koto Ward Government since April 1997) (Type A social welfare service)
  27. Management of Koto Municipal Asunaro Workshop by commissioning (by the Koto Ward Government since April 1997)
  28. Management of Koto Municipal Asunaro Second Workshop by commissioning (by the Koto Ward Government since April 1997)
  29. Management of Setagaya Municipal Kinuta Handicraft Workshop by commissioning (by the Setagaya Ward Government since April 1997) (Type A social welfare service)
  30. Management of SKIP, Setagaya Municipal Employment Support Center, by commissioning (by the Setagaya Ward Government since April 1998)
  31. Management of Setagaya Municipal Kinuta Handicraft Branch Workshop by commissioning (by the Setagaya Ward Government since August 2000)
  32. Minato Center of Inclusion Tokyo (Emergency temporary shelter service and independent

- living training service commissioned by the Minato Ward Government in April 2001)
33. Employment support service for persons with disabilities in Setagaya Ward (commissioned by the Setagaya Ward Government since July 2002)
  34. Management of Setagaya Municipal Karasuyama Welfare Center by commissioning (by the Setagaya Ward Government since April 2003)
  35. Management of the Setagaya Municipal Support Center of Persons with Disabilities by commissioning (by the Edogawa Ward Government since April 2003)
  36. Management of Asunaro, Kita Municipal Welfare Branch School, by commissioning (by the Kita Ward Government since April 2003)
  37. Management of Nerima Municipal Nukui Welfare Center and Nukui Welfare Handicraft Workshop by commissioning (by the Nerima Ward Government since February 2004)
  38. Management of the Edogawa Home for Everybody by commissioning (by the Edogawa Ward Government since April 2004)
  39. Management of the Independent Living Support Center in Edogawa Ward (Consigned by the Edogawa Ward Government in April 2004)
  40. Management of Ota Municipal Minami-Rokugo Welfare School by commissioning (by the Ota Ward Government since April 2004)
  41. Assisting service to Akashi, Chuo Municipal Rainbow House (Commissioned by the Chuo Ward Government since July 2004)
  42. Management of Takadano-baba Sheltered Workshop (Commissioned by Shinjuku-ward government since 2005)
  43. Management of Kamisagikobushi Welfare Center (Commissioned by Nakano-ward government since 2005)
  44. Management of a day service for persons with intellectual disabilities (Commissioned by Nerima-ward government since 2005)
  45. Management of Yahara Blue-sky After School Club (Commissioned by Nerima-ward government since 2005)
  46. Guidance service for sheltered facilities for persons with intellectual disabilities and support service for sheltered facilities for persons with mental or physical disabilities

Consultation service

47. Consultation service on adolescence (service subsidized by the Bureau of Social Welfare and Public Health of the Tokyo Metropolitan Government since 1977)

Enlightening service and etc.

48. Seminars for members
49. To issue monthly news letters (on the 20<sup>th</sup> day of each month)
50. To issue news letters for Persons with Intellectual Disabilities (Quarterly)
51. To publish books related to persons/children with intellectual disabilities
52. Seminars for staff of facilities
53. Assistance for activities at each chapter and each regional block
54. Cooperation with related organizations
55. Support for leisure activities of persons/children with disabilities (Trip for youths, sports, chorus, etc.)
56. Other activities

Residential Facility for Persons with Intellectual Disabilities

- 1) Tobuki Ikusei-en, Hachioji City
- 2) Ongata Ikusei-en, Hachioji City
- 3) Suginami Ikusei-en, Suginami-ward

Non-residential Facilities for Persons with Intellectual Disabilities

- 1) Takasago Welfare Center, Katsushika-ward
- 2) Kamakura Welfare Center, Katsushika-ward
- 3) Nishisuigen Welfare Center, Katsushika-ward

Model Project of Community Living of Persons with Intellectual Disabilities

Living Support Home “Setagaya”, Setagaya-ward

Home-based Nursing Care Service for the Elderly

Home-based nursing care station “Yamabato”, Higashimurayama City

Half-way House for Persons with Intellectual Disabilities Commissioned by Tokyo Metropolitan Government

- 1) Koutou Half-way House, Koutou-ward
- 2) Ohta Half-way House, Ohta-ward
- 3) Toshima Half-way House, Toshima-ward
- 4) Tachikawa Half-way House, Tachikawa City